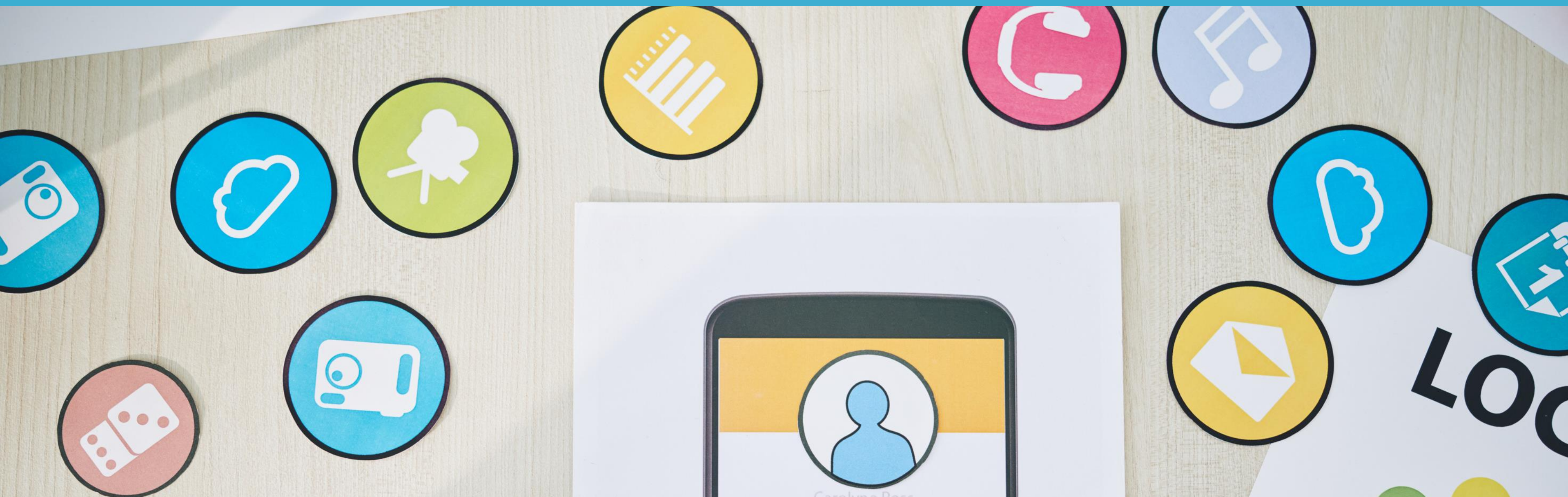


TECH TOOLS

Elisa Nelson Elementary School • Presented by Ms. Martin



TODAY'S AGENDA

Resources in Clever



Reading Resources in Clever



clever

Clever is your school's digital learning platform, one friendly place for resources, communication, and instruction. With single sign-on, everything is one click away for students, families, and educators. It works the same everywhere, so your community is remote-resilient.



Office 365

- all students have an email address they can use to communicate with teachers
- Each student can download Microsoft products to their computer at no charge while a student in our county.
- Student's have access to Microsoft online

ONE STOP SHOP FOR ALL LIBRARY NEEDS

- Check out books online
- Find book collections
- Read ebooks
- Search books currently in collection





READING RESOURCES



myON[®] READER

myChoice, myBooks, myGrowth[®]

A personalized digital library at every student's fingertips Titles are dynamically matched to each individual student's interests, grade and Lexile[®] reading level. Combined with a suite of close reading tools and embedded supports, myON Reader fosters student engagement and achievement.



Sora

The student reading app

The Sora app was designed around the modern student reading experience. It empowers students to discover and enjoy ebooks and audiobooks from their school, for both leisure and class-assigned reading.

GALE IN CONTEXT

ELEMENTARY

Gale In Context: Elementary is a simple, cross-curricular resource that ensures equity and continuity for all students in the district. This database advances education and gives children the research skills they will need in middle school, high school, and beyond.